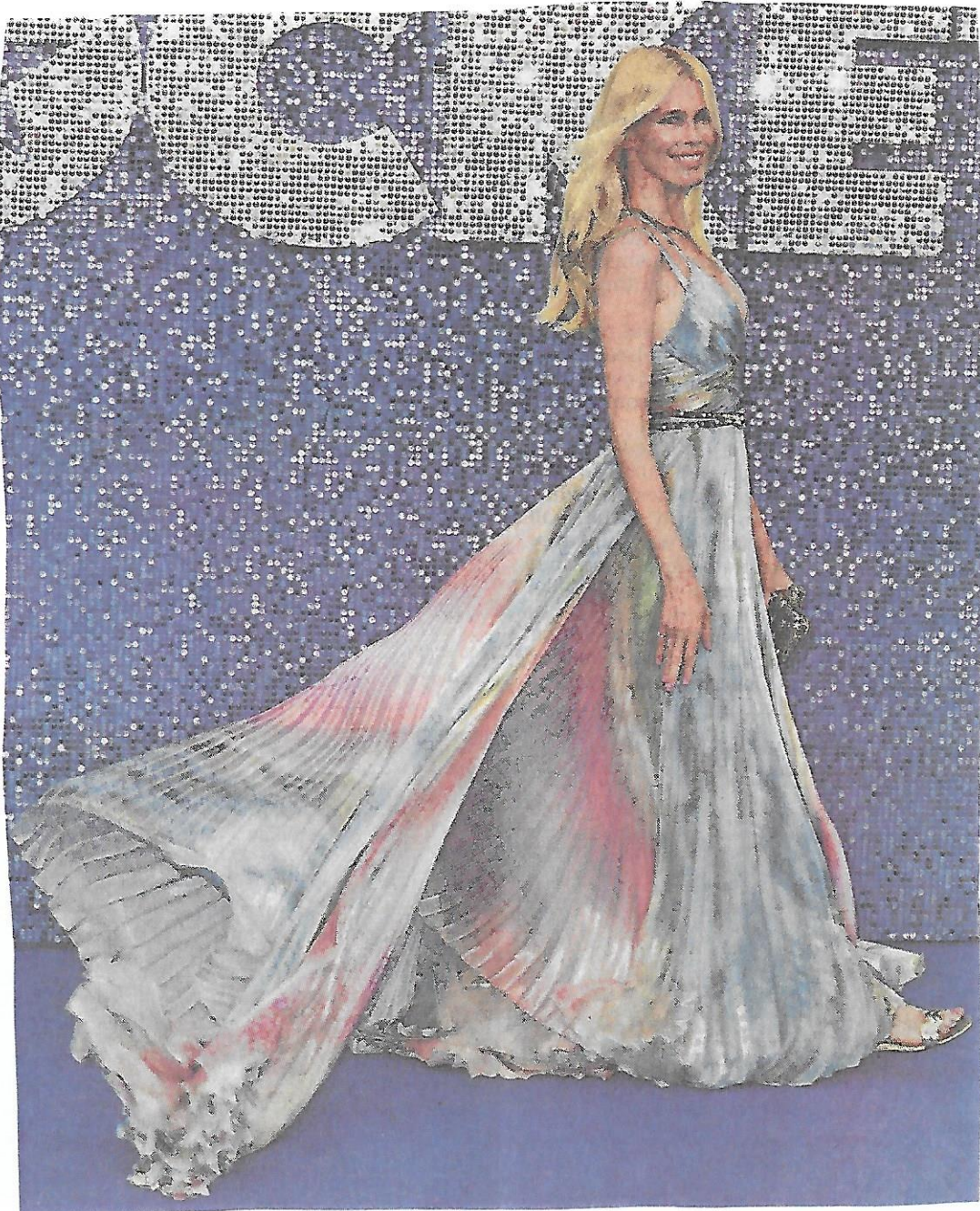


Monday 2nd March

Tonight we feature the return of Gemma. This time she will pose in the limelight at a movie premier night on the red carpet.

What to bring

Your choice



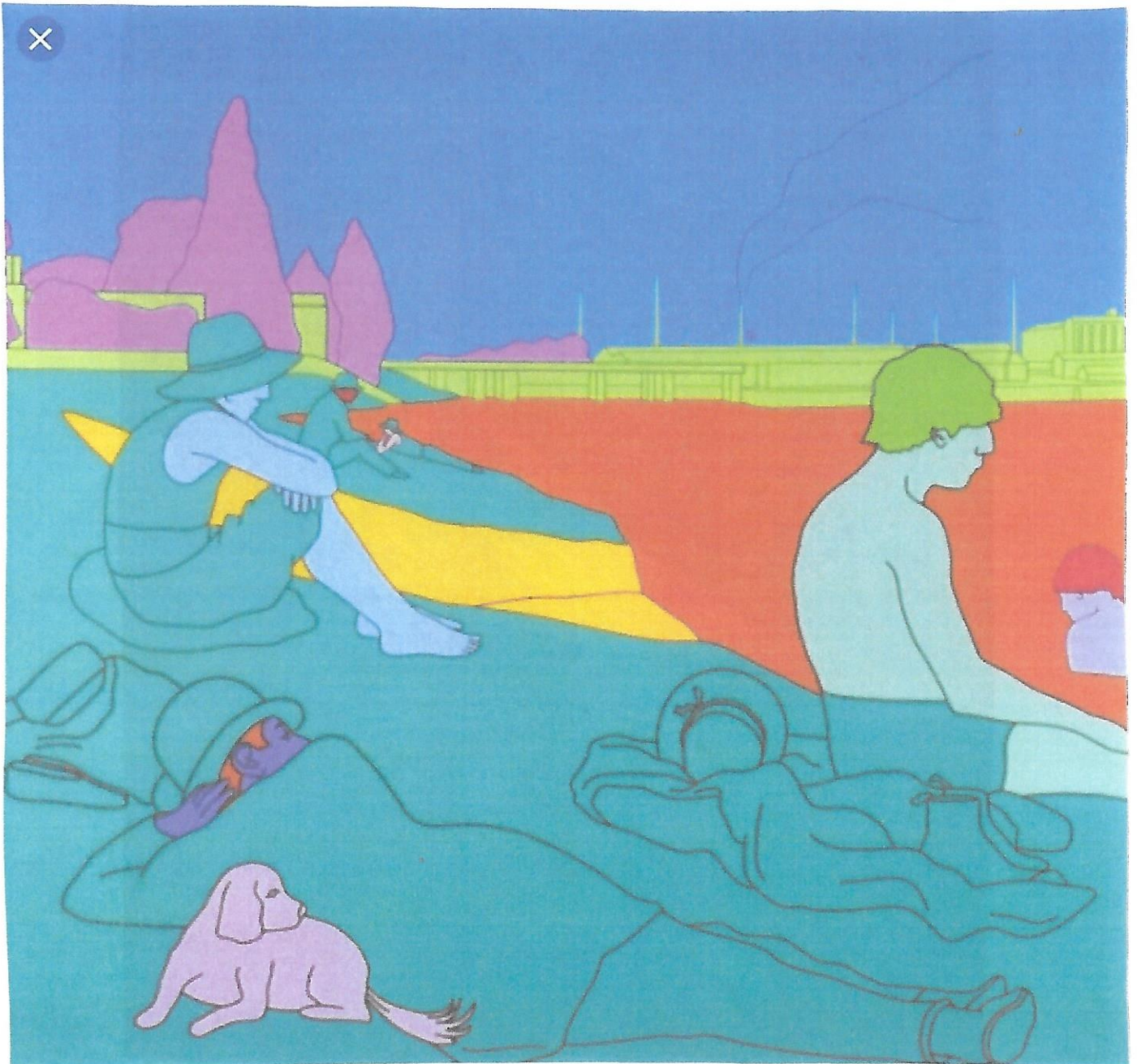


Monday 9th march

This evening bring your own example of a masterpiece and rework it in a more modern style such as the example below.

what to bring

a copy of a well known masterpiece  
your own choice of material to work with



Monday 16th march

When we look at a famous face we can usually, instantly recognise them from their facial features, but you can also recognise famous people by the overall image that they produce. Look at the pictures below and try and recognise them from the images provided.

A



B



C



D



Bring your own pictures of well known people and produce your own images and at the end of the session we will have a judging competition based on recognition from your images.

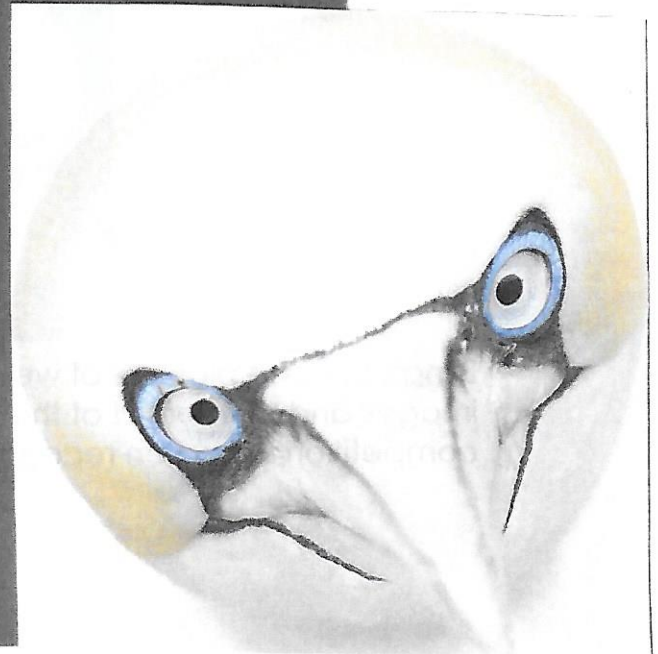
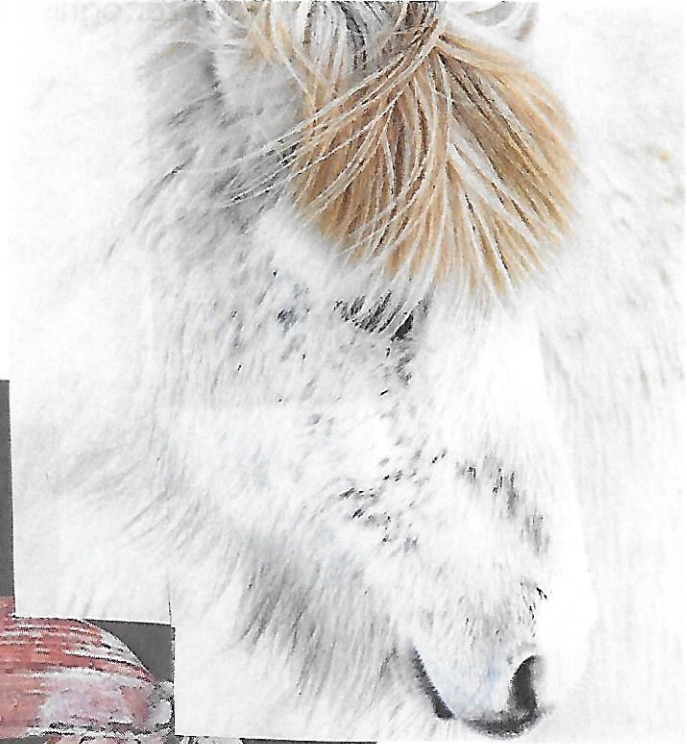


Monday 23rd march

In the newspapers there are some fantastic pictures of wildlife in all its various forms. Bring your own favourite wild life pictures a draw or paint it in your own style and medium.

What to bring

Your choice





Monday 30th march

"You can't always tell a book by its cover". True or False?

Tonight we are going to have a little competition. Think of the name of your favourite book and make a cover without the title on which represents the contents of the book.

What to bring  
your choice





Monday 20th april

Around this time of the year, in Japan it is the cherry blossom time which is celebrated throughout the land. Try to produce a small picture

which depicts a view of the cherry blossom in a Japanese setting.





Monday 27th april

Tonight Liz Trayford from the Society is going to give use a demo/work shop on how to produce her very original take on pictures.

