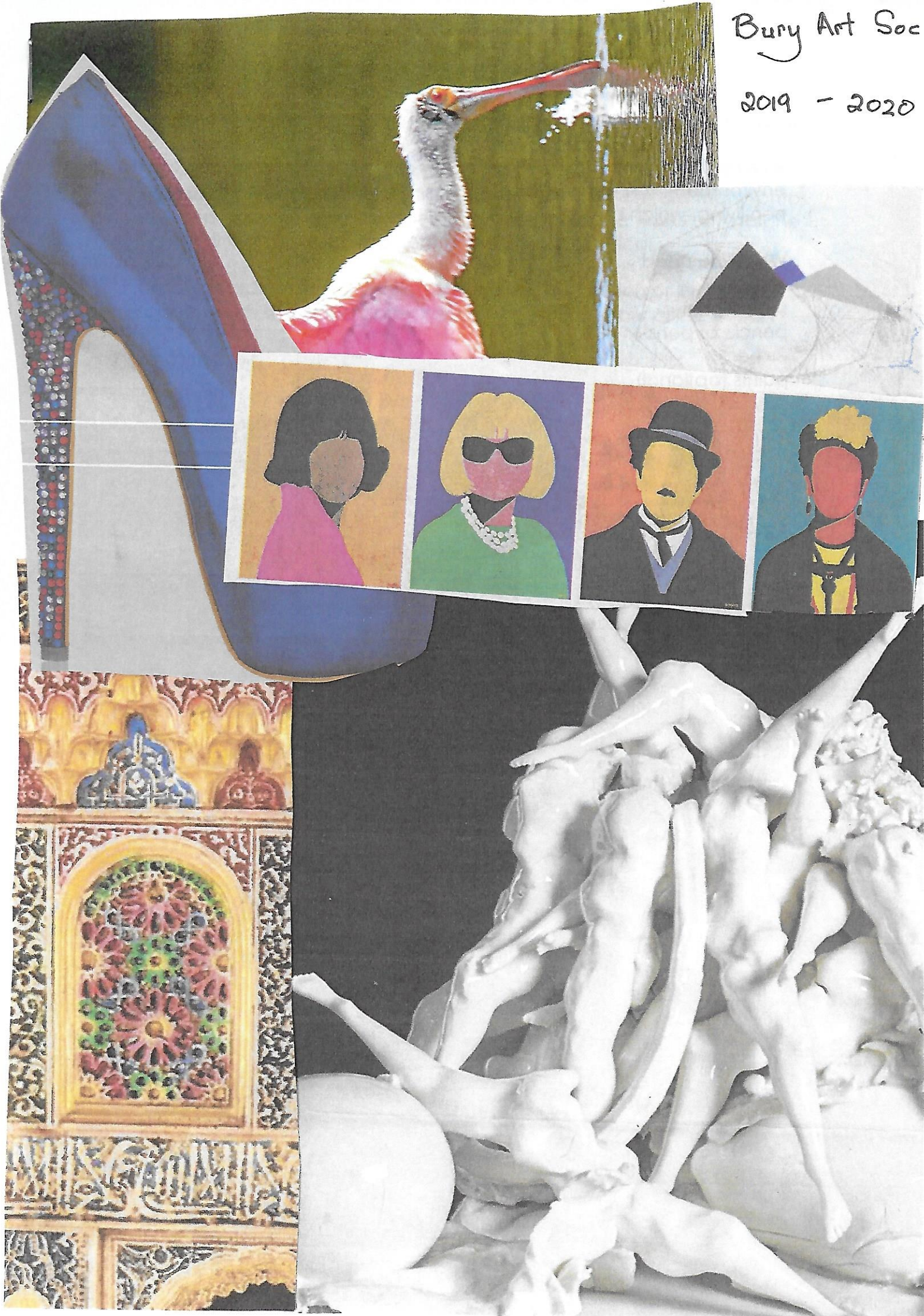


Bury Art Soc
2019 - 2020



monday 9th sept

As ever this session is a still life based on organic forms in the environment. The term organic applies to all things, both living and non-living, which are not man - made.

What you need

sketch pad

pencils or pens

eraser

paints (optional)

IKEBANA



monday 16th sept

The air around us is vital to our well being, but with modern day pollution the is becoming an increasing problem. There are many phtos showing air pollution in our cities but if we look at the works of Adolphe Valette it is obvious the problem of pollution is historical.

Create a picture which depicts the causes of pollution or the a city scape which shows the appearance of pollution in our cities.

what to use

your choice



monday 23rd sept

Anthony Barrow is a member of NAPA, the National Acrylic Painters Association and MIFL, Member of the Institute for Learning he is also a member of the OK studio Collective Based at Standish near Wigan.

Tonight Anthony is going to give us a demonstration on how to use a combination of charcoal and acrylics.



monday 30th sept

Tonight we are going to use the information we got from Anthony last week to create a composition of your choice using the technique involving charcoal and acrylics.

what you will need

charcoal
acrylic paints
painting equipment
paper or canvas

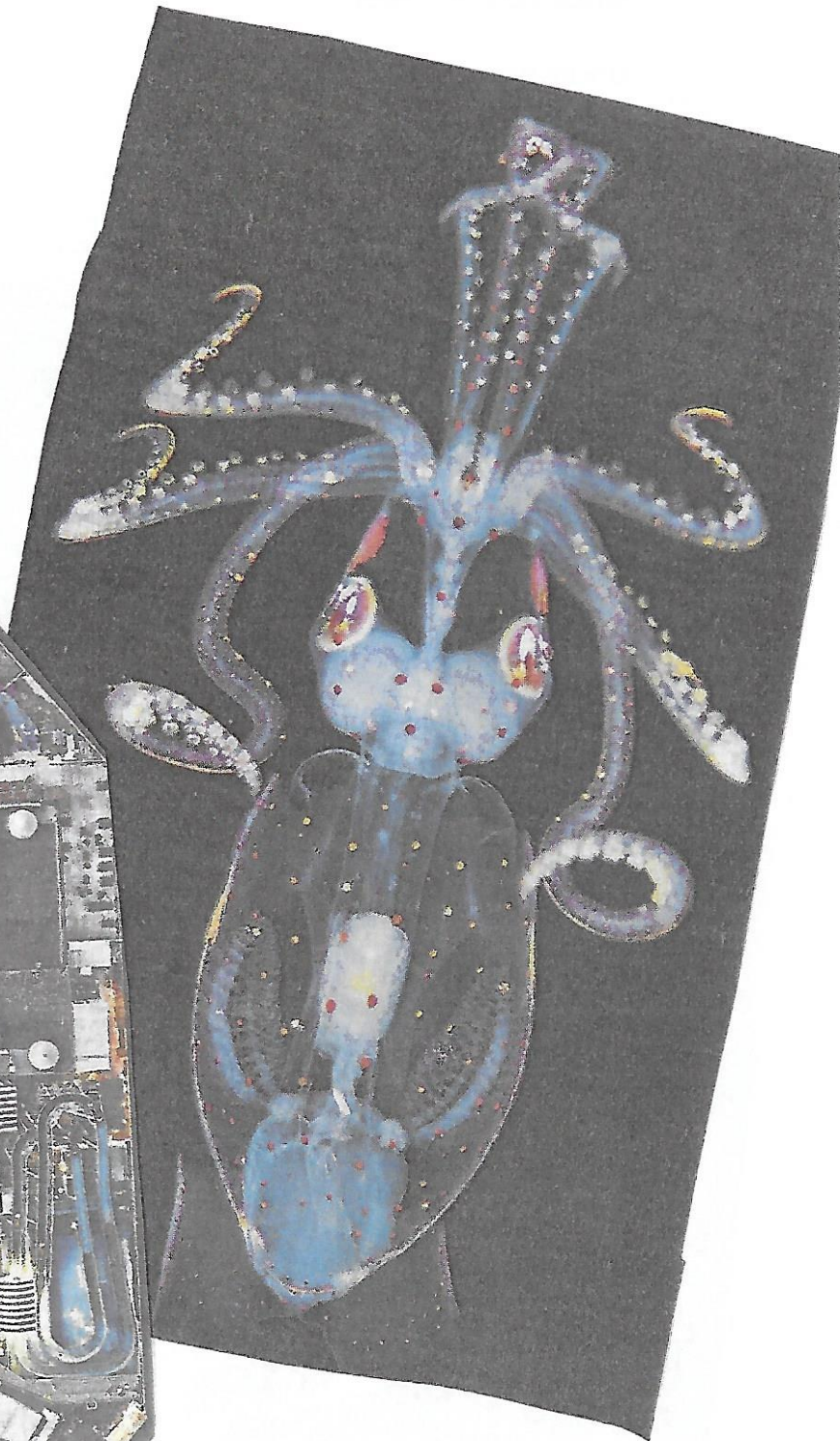
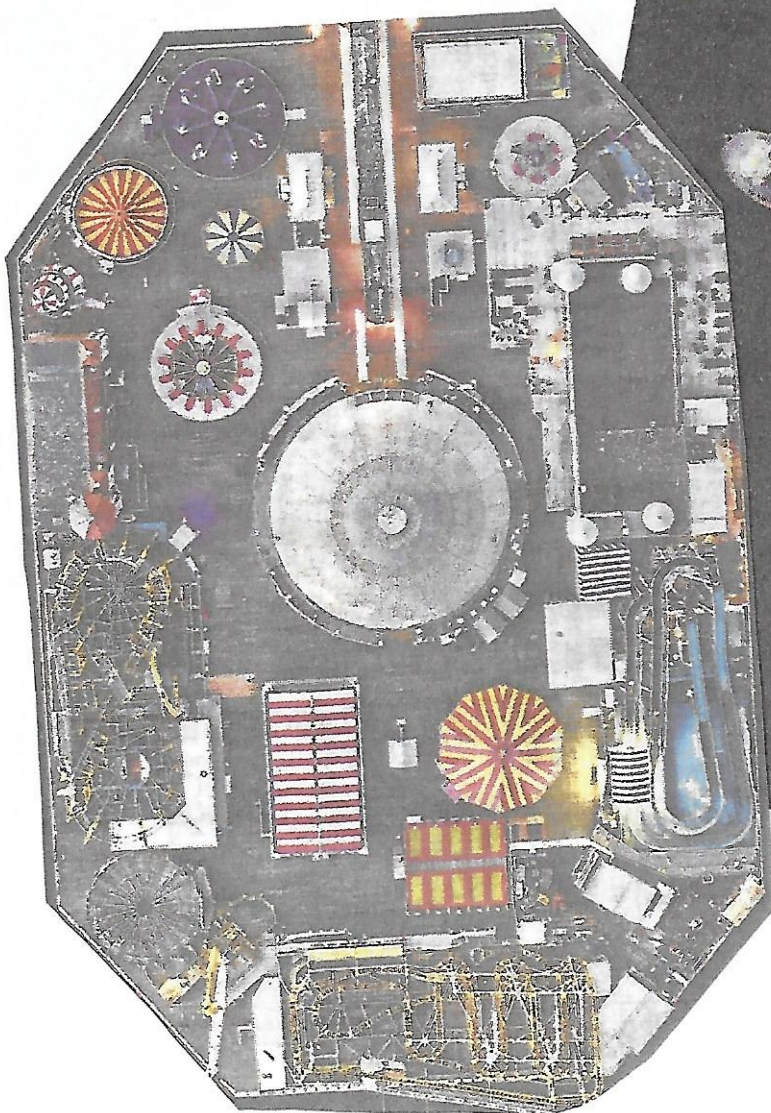


monday 7th oct

Tonight we are going to revisit an idea from last year where we looked at aerial views of places of interest. Tonight we want to look at objects or places from another viewpoint whether it be from above, below or from the side to give an almost abstract perspective.

what you need

your choice



monday 14th oct

Tonight we are going to look at a painter, designer and architect famous in the last century. He was friends with Gustav Klimt and Egon Schiele. Situated in Glasgow, Charles Rennie MacIntosh produced some of the most famous pieces of art work as well as some very noted buildings and adornments for those buildings. Tonight create a picture based on the style of MacIntosh.

Equipment

Your Choice



saturday 19th oct

Next summers exhibition will be paintings by you based on 12 pictures from Bury Art Gallery. These pictures will be available to view and you can listen to what the curators have to say about them and what they are aiming for in the exhibition. We will meet in the gallery at 10.30 until 11.30 . the meeting should be very informative and worthwhile attending.

Monday 28th Oct

This year I visited the Touchstones Gallery in Rochdale where an exhibition by a sculptor called Rachel Kneebone was on view. The sculptures were based on dance and movement. Tonight is the first part of a 4 week project to produce sculptures similar to those of Rachel Kneebone

Tonight Ema Couteleau is going to do some contemporary dance with poses within the dances. She will be using a ball, ribbon and flowers within the dances. These may be part of your sculptures. So at the end of the evening you should have some sketches of Ema which you can work on and develop next week.

